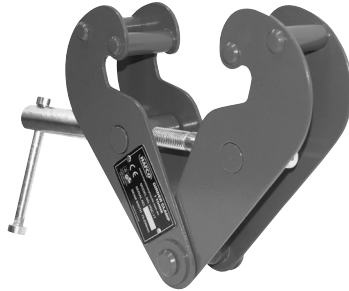




GIRDER CLAMP
1 TONNE
Complies to AS4991



GIRDER TOLLEYS
1 & 2 TONNE
Complies to AS1418.2



Edition : 1.0
Date: (07/26)

Instruction Manual

GIRDER CLAMP & GIRDER TROLLEYS

HGC-S2-1T, HGT-S2-T1, HGT-S2-2T

Order Code: (C146, C147, C148)

Safety information

Each year, numerous accidents occur that could have been easily prevented with a moment of forethought and a more cautious approach to equipment handling. As the operator, you play a crucial role in maintaining a safe work environment. By following the safety precautions outlined in this manual, you can significantly reduce the risk of injury.

Please observe the following:

- Thoroughly review and follow all safety instructions provided in this manual. Ensure that anyone working with or near the equipment also understands and follows these guidelines.
- Replace any caution, warning, danger, or instructional safety labels that are missing or illegible.
- Never operate this equipment while under the influence of alcohol, drugs, or any substances that may impair your judgment or reaction time.
- The operator must be a responsible adult. Do not allow anyone to operate or assemble this equipment without fully understanding the safety precautions and operational procedures.
- Never exceed the rated lifting capacity. If there is any uncertainty about the equipment's ability to perform a task safely do not attempt it.

Your attention to these precautions can help prevent accidents and ensure the safe and effective use of this equipment.

CONTENTS

| | |
|-------------------------------|----|
| Safety Information | 2 |
| Introduction & Warnings | 3 |
| Installation | 4 |
| Operating & Selection | 5 |
| Dimensions & Specifications | |
| Girder Clamp | 6 |
| Girder Trolley | 7 |
| General Maintenance | 8 |
| Warranty | 9 |
| Inspection Log..... | 10 |

Introduction & Warnings

HAFCO Girder Clamp

The HAFCO Girder Clamp offers a reliable and versatile suspension point suitable for a variety of applications, including lifting and hoisting operations. As with the trolley, the beam width must fall within the range specified on the clamp's ID plate. A competent person must assess the beam to ensure it is appropriate for use prior to installation. Please note that in certain states or territories, operators may require appropriate training or licences to use this product. It is the user's responsibility to verify and comply with any applicable regulatory requirements.

HAFCO Girder Trolley

The HAFCO Girder Trolley is designed to provide a simple and efficient method for attaching a trolley to an overhead monorail. It can be quickly adjusted to suit the required beam width using spacers on the suspension pin. Before installation, the beam width must be verified to fall within the specified range indicated on the trolley's ID plate. Additionally, the beam must be assessed by a competent person to confirm its structural suitability for use with the trolley.

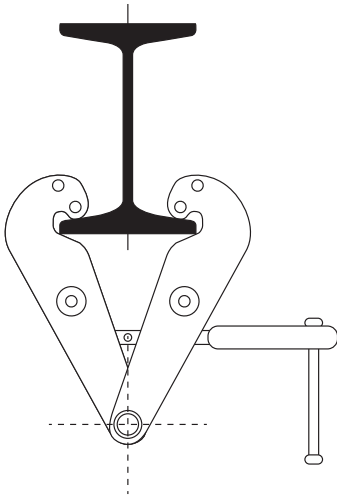
WARNING

- Never lift or transport a load over personnel.
- Do not leave a suspended load unattended at any time.
- Ensure the rated capacity of the Girder Trolley or Girder Clamp is never exceeded.
- Conduct regular inspections of the Girder Trolley or Girder Clamp to ensure proper condition and safe operation.
- Do not modify the Girder Trolley or Girder Clamp under any circumstances.
- Avoid applying side loads to the Girder Trolley or Girder Clamp.
- As the trolley wheels are not equipped with brakes, these products must not be used on an inclined surface.
- Always wear appropriate Personal Protective Equipment (PPE) when operating or working near this equipment.
- Never operate this equipment while under the influence of alcohol, drugs, or any substances that may impair judgment.

Installation

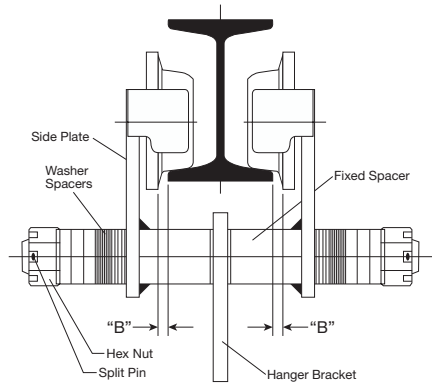
HAFCO Girder Clamp

Turn the clamps handle anti clockwise until the jaws are open sufficiently to fit over the bottom flange of the monorail. Now turn the handle clockwise until the side plates of the clamp are firmly closed over the bottom flange of the monorail. Always ensure that the bottom flange of the monorail fits into the side plates (if in doubt check before using the clamp).



HAFCO Girder Trolleys

The gap between the wheel flange and the monorail should be approx. 1.6mm to max. of 2.5mm. Ref "B" on both side of the beam. To widen the trolley, remove split pins and hex nuts. Remove washer spacers from centre bolt and place between hanger bracket and fixed spacers. Note: Washer spacers must be moved in sets of two, one on either side of the hanger bracket, as the hanger bracket must always remain centered between the trolley side plates.



Once trolley width is spaces properly, install remaining washer's spacers on the centre bolt on the outside of the side plates. Install hex nuts and split pins. Do not over tighten nuts. Tighten nuts and then back nuts off to align the nut with the hole in shaft for split pin. Insert split pin through each hex nut and bend one end of split pin.

Operation & Selection

Never use a Girder Trolley or Girder Clamp to support or move people. If a load is to be left unattended always lower, it to the ground (never leave a suspended load unattended).

HAFCO Girder Clamp

Once the Girder Clamp has been fitted to the beam it is now ready for use. Always check that the Girder Clamp has the correct capacity to support the load to be lifted, always include the weight of the lifting device that is to be suspended.

Connect your lifting device to the suspension point of the Girder Trolley ensuring that the hook of your lifting device sits centred on the bar, also ensure that the hook sits evenly (make sure that the hook is not being supported by its cheeks).

The load can now be lifted, ensure that the load is only lifted vertically. Never side pull or side load the Girder Clamp.

Note: *Additional security is provided by the locking hex screw, which secures the threaded adjustment bar in position after adjustment.*

HAFCO Girder Trolley

Once the Girder Trolley has been fitted to the beam it is now ready for use. Always check that the Girder Trolley has the correct capacity to support the load to be lifted, always include the weight of the lifting device that is to be suspended.

Connect your lifting device to the suspension point of the girder trolley ensuring that the hook of your lifting device sits centred on the bar, also ensure that the hook sits evenly (make sure that the hook is not being supported by its cheeks).

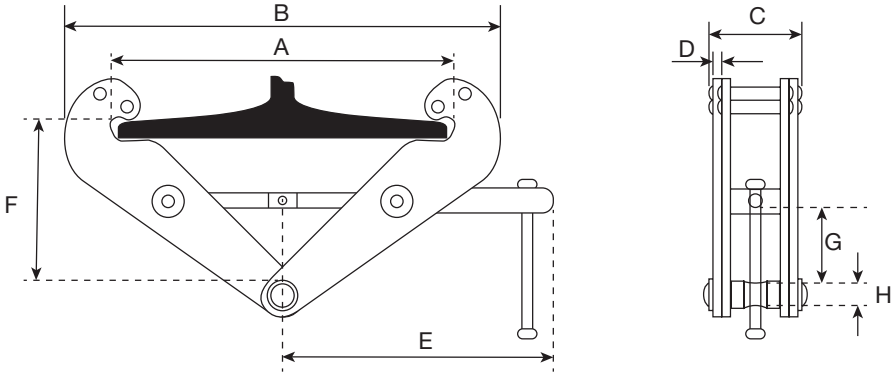
The load can now be lifted, ensure that the load is only lifted vertically. Never side pull or side load the Girder Trolley. When the trolley is traversing the beam ensure that a slow and even pace is sustained. Never jerk the load as the load will act like a pendulum and may cause an accident. Always check that end stops have been fitted to the monorail, if end stops are not fitted do not use the girder trolley until they are.

Item Selection

When choosing the correct Girder Trolley or Girder Clamp a number of items must be taken into account. The tables on the following pages may help when selecting items in the future.

Dimensions & Specifications

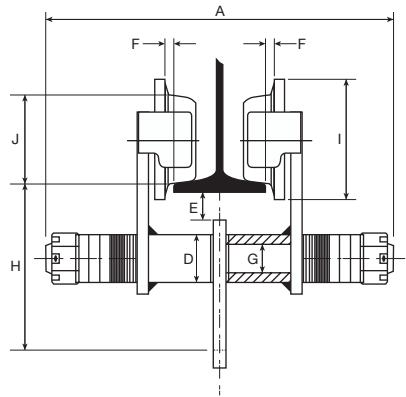
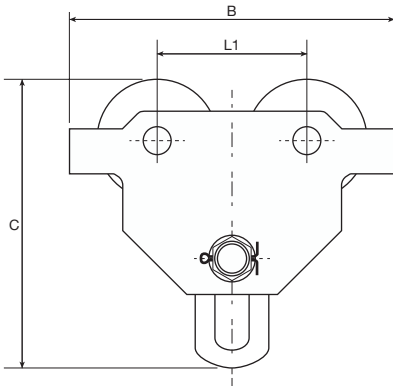
HAFCO Girder Clamp



| Model | HGC-S2-T1 |
|-----------------------|-----------|
| Rated Capacity | 1 tonne |
| Proof Load kN | 2 tonne |
| Adjustable Beam Width | 75-230mm |
| A (max) | 284mm |
| B (min) | 180mm |
| B (max) | 375mm |
| C | 80mm |
| D | 4mm |
| E | 220mm |
| F (min) | 102mm |
| F (max) | 160mm |
| G (min) | 29mm |
| H | 20mm |
| Weight | 4kg |

Dimensions & Specifications

HAFCO Girder Trolleys



| Model | HGT-S2-1T | HGT-S2-2T |
|-----------------------|-----------|-----------|
| Rated Capacity | 1 tonne | 2 tonne |
| Proof Load kN | 2 tonne | 4 tonne |
| Adjustable Beam Width | 64-203mm | 88-203mm |
| A (Length) | 311mm | 327mm |
| B | 246mm | 276mm |
| C | 222mm | 263mm |
| D | 40mm | 52mm |
| E | 38mm | 38mm |
| F | 1.5-3mm | 31.5-3mm |
| G | 30mm | 36mm |
| H (Headroom) | 125mm | 150mm |
| I (Flange Dia.) | 95mm | 108mm |
| J | 68mm | 80mm |
| L1 | 120 | 132 |
| Weight | 10.5kg | 17.5kg |

General Maintenance

HAFCO Girder Clamp

The Girder Clamp should only require a small amount of lubrication to its pivot points and the screw thread. Use only light grade machine oil and never over lubricate. Regularly inspect the Girder Clamp for damage, check all pivot points are intact and that the side plates are not bent or cracked. If in any doubt as to the ability of the Girder Clamp to support its rated capacity, then remove it from service and return it to HAFCO Sales for inspection.

HAFCO Girder Trolley

The Girder Trolley is equipped with sealed; lifetime lubricated precision ball bearings that should require no further lubrication.

Regularly inspect the Girder Trolley for damage and that the cotter pin has not become dislodged and the castle nut has not become loose. Apply a thin film of machine oil to the hand chain of a Geared Girder Trolley if required. Never over lubricate.

Product Warranty & Warnings

IMPORTANT INFORMATION

1 Year Limited Warranty

HAFCO offers a one year limited warranty on this product.

HAFCO warrants to the original retail consumer and purchaser that this product will be free from defects in materials and workmanship for one year from the date the product was purchased ('the warranty period').

HAFCO will rectify any defect in materials or workmanship appearing within the warranty period by repairing or replacing the product. HAFCO will offer a refund of the purchase price if the product cannot be readily and quickly repaired or replaced. HAFCO reserves the right to determine whether the product contains any defects in materials or workmanship covered by this warranty.

The benefits offered by this warranty are in addition to your rights and remedies that may apply in law. Our goods come with guarantees that cannot be excluded under the Australian Consumer Law. You are entitled to a replacement or refund for a major failure and for compensation for any other reasonable foreseeable loss or damage. You are also entitled to have the goods repaired or replaced if the goods fail to be of acceptable quality and the failure does not amount to a major failure.

How to make a warranty claim

To make a claim under this warranty, the product or part must be returned for examination to an authorised service centre nominated by Hare and Forbes Machineryhouse together with proof of purchase such as the dated sales receipt and an explanation of the problem to be rectified.

Any costs incurred in making a claim under this warranty or returning the product to an authorised service centre is to be borne by the person making the claim unless otherwise agreed by Hare and Forbes Machineryhouse. If Hare and Forbes Machineryhouse determines the product contains a defect in materials or workmanship that is covered by this warranty then Hare and Forbes Machineryhouse will bear the cost of returning the repaired product or replacement product to the person making the claim. If We determines the product does not contain a defect in materials or workmanship covered by this warranty then the cost of returning the product will be at the expense of the person making the claim.

Exclusions

This warranty does not apply to any defect caused by, or associated with misuse, abuse, lack of maintenance, negligence or accidents, repairs or alterations.



ENVIRONMENT PROTECTION

Recycle unwanted materials instead of disposing of them as waste. All tools, accessories and packaging should be sorted, taken to a recycling centre and disposed of in a manner which is compatible with the environment. When the product becomes completely unserviceable and requires disposal, drain any fluids (if applicable) into approved containers and dispose of the product and fluids according to local regulations.

Imported by

HARE & FORBES
MACHINERYHOUSE

Australian Distributor

Hare & Forbes
Machineryhouse
Sydney - Melbourne
Adelaide - Brisbane - Perth

Ph: 1300 202 200
www.machineryhouse.com.au

MACHINERYHOUSE

New Zealand Distributor

Machineryhouse
Auckland
Christchurch

Ph: 0800 142 326
www.machineryhouse.co.nz